

Installation Guide

Model: SL06-CL20H

Version: 1.0

English

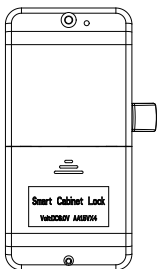
Important Notes

1. Please read this Installation Guide carefully before installation and contact the Customer Care Service if you have any questions regarding the installation.
2. To avoid any future service charges that may arise as a result of incorrect installation, it is recommended that installation must be performed by a professional technician to prevent any potential service charges that may occur due to incorrect installation.
3. We regularly revise the contents of this Installation Guide and update our products to enhance the quality and performance without prior notice.
4. Do not install the batteries until the lock is installed.

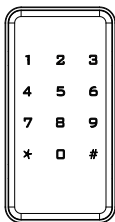
Table of Contents

What's in the Box.....	1
Drill Holes.....	2
Installation Procedure.....	3
Wood Cabinet Situation.....	3

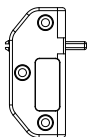
What's in the Box



Indoor Unit



Outdoor Unit



Strike Plate



IC Wristband



Screw B 35mm



Screw A



Screw B 30mm



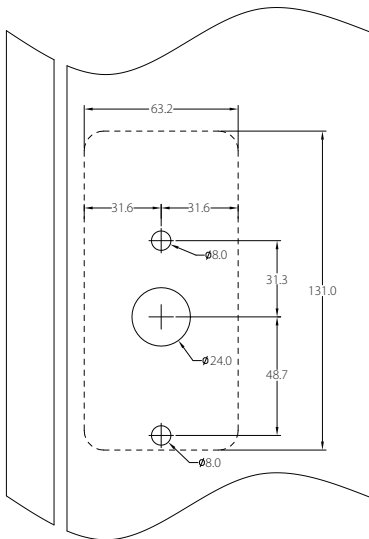
Screw C

Note: This type of cabinet lock suits the cabinet of thickness 15mm to 25mm. If customization is required, please contact us.

Door Thickness	Stud
15 to 20mm	Screw B 30mm
20 to 25mm	Screw B 35mm

Drill Holes

Drill holes on the cabinet door. (Unit: mm)



Installation Procedure

Wood Cabinet Situation

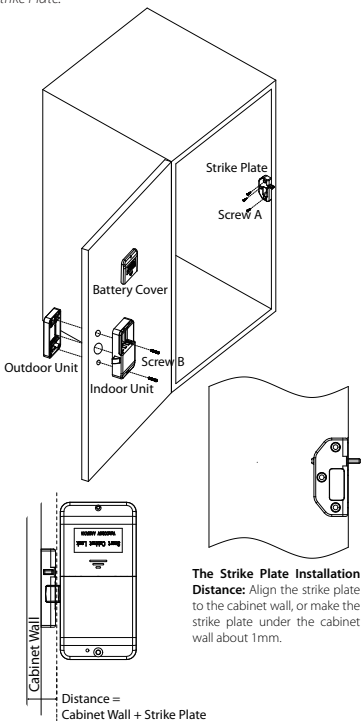
Situation I:

- A. Install the indoor and outdoor units with screw B.
- B. Install the Strike Plate with Screw A.

Note:

The Strike Plate Installation Distance: Align the strike plate to the cabinet wall, or make the strike plate under the cabinet wall about 1mm.

Indoor Unit Installation Distance: Equals Cabinet Wall plus Strike Plate.



The Strike Plate Installation Distance: Align the strike plate to the cabinet wall, or make the strike plate under the cabinet wall about 1mm.

Situation II:

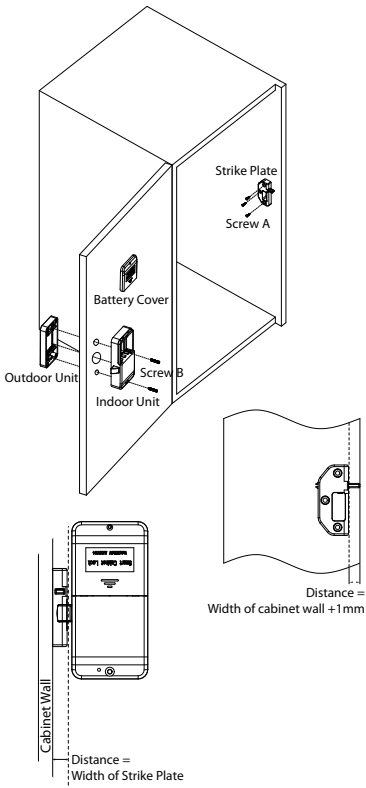
A. Install the indoor and outdoor units with screw B.

B. Install the Strike Plate with Screw A.

Note:

The Strike Plate Installation Distance: Equals Width of cabinet wall plus 1mm.

Indoor Unit Installation Distance: Equals Width of Strike Plate.



User Manual

Model: SL06-CL20H

Version: 1.0

English

Important Notes

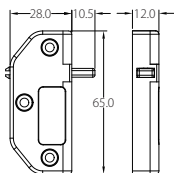
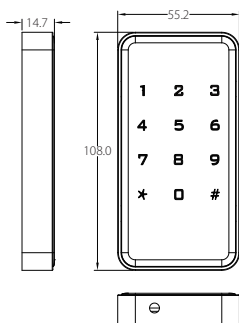
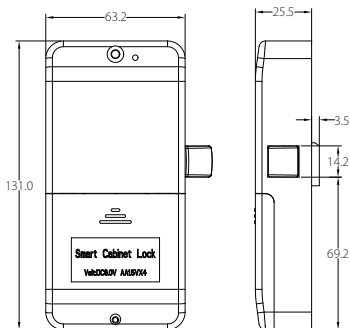
1. This device is divided into self-service password mode and independent password mode. Please confirm which mode you need.
2. Please keep your master card in a safe place, and remember the master password.
3. Do not remove the batteries from the lock while it is in operation.
4. It is necessary to replace the batteries when the device beeps non-stop after being turned on.
5. Our smart cabinet lock is powered by a DC 6V power supply. Four 1.5V AA alkaline batteries (AA batteries) are recommended. When using other non-alkaline batteries, the performance of this smart lock may be affected; especially when the power is insufficient, the function of the low-voltage alarm will be lost, and if you do not replace the battery in time, it may not be able to unlock.

Table of Contents

Product Overview.....	1
Definition (Public Mode).....	2
How to Use.....	3
Definition (Private Mode).....	5
How to Use.....	6

Product Overview

(Unit: mm)



Definition

(Public Mode)

Public Mode: The public mode means that the latch will not pop out automatically after unlocking. This feature it is suitable for public uses, such as Gyms, Spas, Clubs, etc.

Card Type: This mode has three card types, Administrator Card, Manager Card and Guest Card.

Initialization: All registered cards and passwords data will be deleted and restored to the factory settings, all data needs to be reset.

Note: *The Reset button is located next to the screw hole in the Indoor Unit and needs to be reset by poking it with something like a paper clip.*

Random Password: To secure the password, users may enter their password with random digits before or after the actual password. Example: If the correct password is 123456, then the random password can be 89123456807, 1234562363, 389123456, etc.

Low Battery Warning: If the battery power is low, the device beeps non-stop after being turned on.

Emergency Charging: A interface is provided at the bottom of the Outdoor Unit.

Latch Instructions:

1. Both public and private modes are factory equipped latches. If the customer wants to switch modes during use, contact Technical Support to change the latch orientation.
2. When our cabinet locks are shipped from the factory, the door latches are in the open state, and the door latches are retracted into the lock body (to protect the latch). The door latch will unlock when you swipe an authorized door card or enter the correct password.
3. In both public mode and private mode, the door latch will be extended only after swiping the authorized door card or entering the correct password.
4. In public mode, the door latch is in a retracted state when it is not in use. When a guest needs access, the latch extends automatically after entering the guest password.

How to Use

1. Reset the Lock

Press the **Reset** button once the lock beeps twice and the keypad keeps flashing.

2. Register the Administrator Card

After swiping a card to register it as an Administrator Card, the lock has been successfully reset to public mode.

Note: Press the **Reset** button to switch the mode, and the keypad light flashes for 10s. If the Administrator Card is not registered within 10s, the switching mode fails, and the original settings will be retained.

3. Register the Manager Card

- When you swipe the Administrator Card that you set up; the keypad light is always on.
- While the keypad light is on, swipe another card and wait for the keypad light to turn off to register it as a Manager Card.

Note: When locked, swipe the manager card and wait 2 to 3 seconds to unlock it.

4. Register the Guest Card

- When you swipe the Manager Card that you set up, the keypad light is always on.
- While the keypad light is on, swipe another card and wait for the keypad light to turn off to register it as a Guest Card.

Note: In this mode, a maximum of 5 cards can be registered: one Administrator Card, three Manager Cards and one Guest Card.

5. Register the Administrator Password

- When you swipe the Administrator Card that you set up, the keypad light is always on.
- While the keypad light is on, you can enter **★**key + "6-digit passcode" + **#** key. Once you hear a beep, enter **★**key + "6-digit passcode" + **#** key again. Then you can enter the password you set and press the **#** key to unlock the lock.

6. Register the Guest Password

- a. In the case of unlocked, swipe the Guest Card you set up, the keypad light is always on.
- b. While the keypad light is on, you can enter ✖key + "6-digit passcode" + # key. Once you hear a beep, enter ✖key + "6-digit passcode" + # key again. Then you can swipe the Guest Card and enter the password you set, and press the #key to verify and unlock the lock.

Note: *After the manager card is unlocked, only the temporary password is invalidated, and the guest card remains valid. To expire the guest card, you need to swipe the manager card twice.*

7. Set a One-time Temporary Password

- a. When the Guest Card is not registered, touch the keypad to activate the lock.
- b. While the keypad light is on, you can enter ✖key + "6-digit passcode" + # key. Once you hear a beep, enter ✖key + "6-digit passcode" + # key again.

Note: *You can enter the password you set, and press the # key to verify and unlock the lock. The password expires after being used once and cannot be the same as the Administrator Password. When the Guest Card is not registered, you can set an Administrator Password and a One-time Temporary Password. When the Guest Card is registered, you can set an Administrator Password and a Guest Password.*

8. Delete Card and Password

Delete the Guest Card: Swipe the Manager Card twice within 5s and wait for the keypad light to turn off.

Delete the Manager Card: Swipe the Administrator Card twice within 5s and wait for the keypad light to turn off.

Note: *When the manager card is deleted, the guest card can still be used.*

Delete the Administrator Password: Swipe the Administrator Card three times within 5s and wait for the keypad light to turn off.

Definition

(Private Mode)

Private Mode: The private mode means that the latch will pop out automatically after unlocking, This feature it is suitable for personnel or high-level security applications.

Card Type: Private mode includes three types of cards — Administrator Card, Manager Card, and Guest Card.

Initialization: All registered cards and passwords data will be deleted and restored to the factory settings, all data needs to be reset.

Note: *The **Reset** button is located next to the screw hole in the Indoor Unit and needs to be reset by poking it with something like a paper clip.*

Random Password: To secure the password, users may enter their password with random digits before or after the actual password. Example: If the correct password is 123456, then the random password can be 89123456807, 1234562363, 389123456, etc.

Low Battery Warning: If the battery power is low, the device beeps non-stop after being turned on.

Emergency Charging: A interface is provided at the bottom of the Outdoor Unit.

Latch Instructions:

1. Both public and private mode are factory equipped latches. If the customer wants to switch modes during use, contact Technical Support to change the latch orientation.
2. When our cabinet locks are shipped from the factory, the door latches are in the open state, and the door latches are retracted into the lock body (to protect the latch). The door latch will unlock when you swipe an authorized door card or enter the correct password.
3. The door latch is generally extended while in use. It retracts when unlocked and then extends automatically.

How to Use

1. Reset the Lock

Continuously press the **Reset** button until you hear two beeps from the lock, followed by a **Do-ra-mi sound**, while the keypad continues flashing.

2. Register the Administrator Card

After Swiping a card to register it as an Administrator Card, the lock has been successfully reset to private mode.

Note: Press the **Reset** button to switch the mode, and the keypad light flashes for 10s. If the Administrator Card is not registered within 10s, the switching mode fails, and the original settings will be retained.

3. Register the Manager Card

- a. When you swipe the Administrator Card that you set up, the keypad light is always on.
- b. While the keypad light is on, swipe another card and wait for the keypad light to turn off to register it as a Manager Card.

Note: When locked, swipe the manager card and wait 2 to 3 seconds to unlock it. After that, the guest card becomes invalid.

4. Register the Guest Card

- a. Swipe the Manager Card you have set up, the keypad light stays on.
- b. While the keypad light is on, swipe another card and wait for the keypad light to turn off to register it as a **Guest Card**.

Note: When locked, swipe the Guest card to unlock it. This mode allows registration of up to 5 cards: one Administrator Card, three Manager Cards, and one Guest Card.

5. Register the Administrator Password

- a. When you swipe the Administrator Card that you set up, the keypad light is always on.
- b. While the keypad light is on, you can enter **★**key + "6-digit passcode" + **#** key. Once you hear a beep, enter **★**key + "6-digit passcode" + **#** key again. Then you can enter the password you set and press the **#** key to unlock the lock.

6. Register the Manager Password

- a. Swipe the Manager Card you set up, the keypad light is always on.

b. While the keypad light is on, enter * key + "6-digit passcode" + # key. When a beep is heard, enter * key + "6-digit passcode" + # key again. Then you can enter the password you set and press the # key to unlock the lock.

Note: *When locked, input the Manager Password to unlock.*

7. Set the Combined Unlock Mode

The manager card is swiped twice continuously within 5 seconds to switch to the combined unlock mode.

Note: *In combined unlock mode, both the Guest Card and Manager Password are required for unlocking.*

8. Delete Card and Password

Delete the Manager Card: Swipe the Administrator Card twice within 5 s and wait for the keypad light to turn off.

Note: *When the manager card is deleted, the guest card can still be used.*

Delete the Combined Unlock Mode: Swipe the Manager Card three times within 5s and wait for the keypad light to turn off. Then, you can use both the Manager Password and the Guest Card independently to unlock the door latch.

Delete the Administrator Password: Swipe the Administrator Card three times within 5s and wait for the keypad light to turn off.