

G5

Outdoor & Multi-Biometric Access Control Terminal

Compatible with



Compatible with



8 Inch screen



Android 9.0



IP66



IK04



Built-in POE



Facial
Recognition



Features



- 8 inch TFT color touch screen with narrow bezel design
- Support various biometrics authentication, including facial recognition, fingerprint verification, multi-tech cards detection and password
- Facial recognition distance: 0.3m to 3m, facial recognition duration less than 1 second per user, facial recognition accuracy rate $\geq 99\%$
- Record capacity reaches 5,000,000 ; user capacity reaches 100,000 ; face templates capacity: 100,000 ; card capacity: 100,000
- Dual-frequency (125kHz and 13.56MHz) card module (standard)
- Support Wiegand, RS-485, TCP/IP, Wi-Fi, Android LCDP, PUSH SDK
- Support encryption of all biometric credentials and personal information transfer that reaches AES-256 standard.
- Android LCDP for the 3rd-party application integration
- IEEE 802.3af/at PoE (Power over Ethernet) power supply
- Mask detection and human body temperature detection (optional)
- Anti-spoofing algorithm against print attack (laser, color, and B/W photos) and video attack
- Achieve IP66 waterproof & dustproof and IK04 vandal proof protection level

Specifications (: GL Exclusive Feature)

System

Operation System	Android 9.0
CPU	64bit Eight Core Customized Computer Vision CPU
Storage	2GB LPDDR3 16GB eMMC
SDK	Android LCDP, PUSH SDK


Basic

Communication	TCP/IP, Wi-Fi, Bluetooth, USB
 Display	8 inch TFT LCD Color Screen
Screen Type	Capacitive Touch Screen
Resolution	800*1280
Camera	2MP Binocular Camera
QR Code (optional)	Dynamic QR codes on the ZKBioSecurity mobile application QR code, PDF417, Data Matrix, MicroPDF417, Aztec scanning in third-party development projects
 Card Type	Dual-frequency (125kHz and 13.56MHz) card module (standard) Multi-tech Card Module (optional) ISO14443A/B & ISO15693 & HID Prox

Interface




USB	1 USB 3.0, 1 USB 2.0, 1 Micro USB
Power Adapter	12V 3A
Ethernet	RJ45, 1000M;
RS232	1
RS485	1
Wiegand	1 input, 1 output
Auxiliary input	1
Sensor	1
Exit Button	1
Lock	1
Alarm	1
Bell	1
Power out	1, 12V
Reset Button	1

Performance

 Protective level	IP66 without Fingerprint /QR Code Reader IP65 with Fingerprint /QR Code Reader IK04
Card reading distance	1cm–5cm
Face Recognition Range	Face-camera distance: 0.3 m to 3.0 m; Human height: 0.9 m to 2.4 m
Face Verification Accuracy	≥99%

Face Recognition Time	< 1s
Fingerprint Sensor Type(optional)	Optical
Fingerprint Comparison Time	≤0.5s
Facial Recognition Method	1:1, 1:N
Fingerprint Verification Method	1:1, 1:N
Facial Recognition Algorithm	ZKFace 5.6.2
Fingerprint Recognition Algorithm	ZKFinger 10.0

Firmware

 User Capacity	100,000
 Face Templates Capacity	100,000
Fingerprint Capacity (optional)	30,000
Card Capacity	100,000
 Record Capacity	5,000,000
Standard Firmware Functions	Push, Schedule Bell, Automatic Status Switch, Record Query, Access Levels, Groups, Holidays, DST, Duress Mode (Password & Fingerprint), Anti-Passback, Customization of Wallpaper & Screen Saver, Tamper Alarm
Language	English, Korean, Latin American, Indonesian, Vietnamese, traditional Chinese, Portuguese, Spanish, Farsi, Japanese, Russian and Thai
Software	BioTime 8.0, ZKBioSecurity, ZKBioCV Security

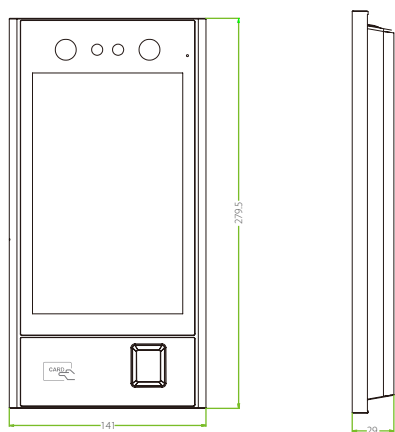
Body Temperature Detection(optional)

Preventative Measures	Mask detection/Body temperature detection
Temperature Measurement Distance	50cm to 120cm(1.64ft to 3.94ft)
Temperature Measurement Accuracy	±0.3°C(±0.56°F)
Temperature Measurement Range	20°C to 50°C (68°F to 122°F)

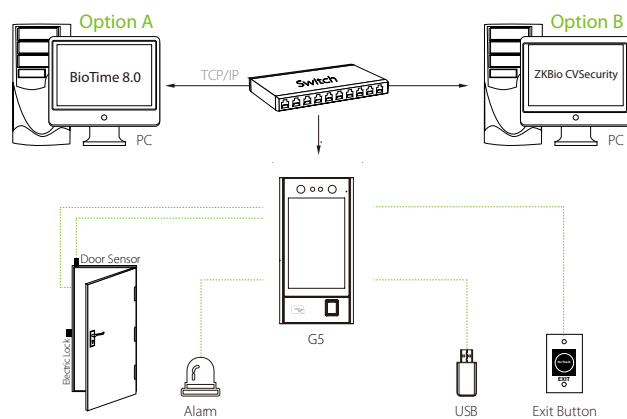
General

 Power Supply	12V 3A; PoE (IEEE802.3af/at)
Dimensions	279.5mm*141mm*29mm(11in*5.55in*1.14in)
Operating Temperature	-10°C to 50°C (14°F to 122°F)
Operating Humidity	<90%RH
Operating Environment	Outdoor
Gross Weight	1.2kg
Installation Method	Wall-mounted or Turnstile top-mount bracket
Certifications	CE,FCC,ISO9001,ISO14001,IP66 ,IK04

Dimensions (mm)



Configuration



V1.3 06/06/2023